

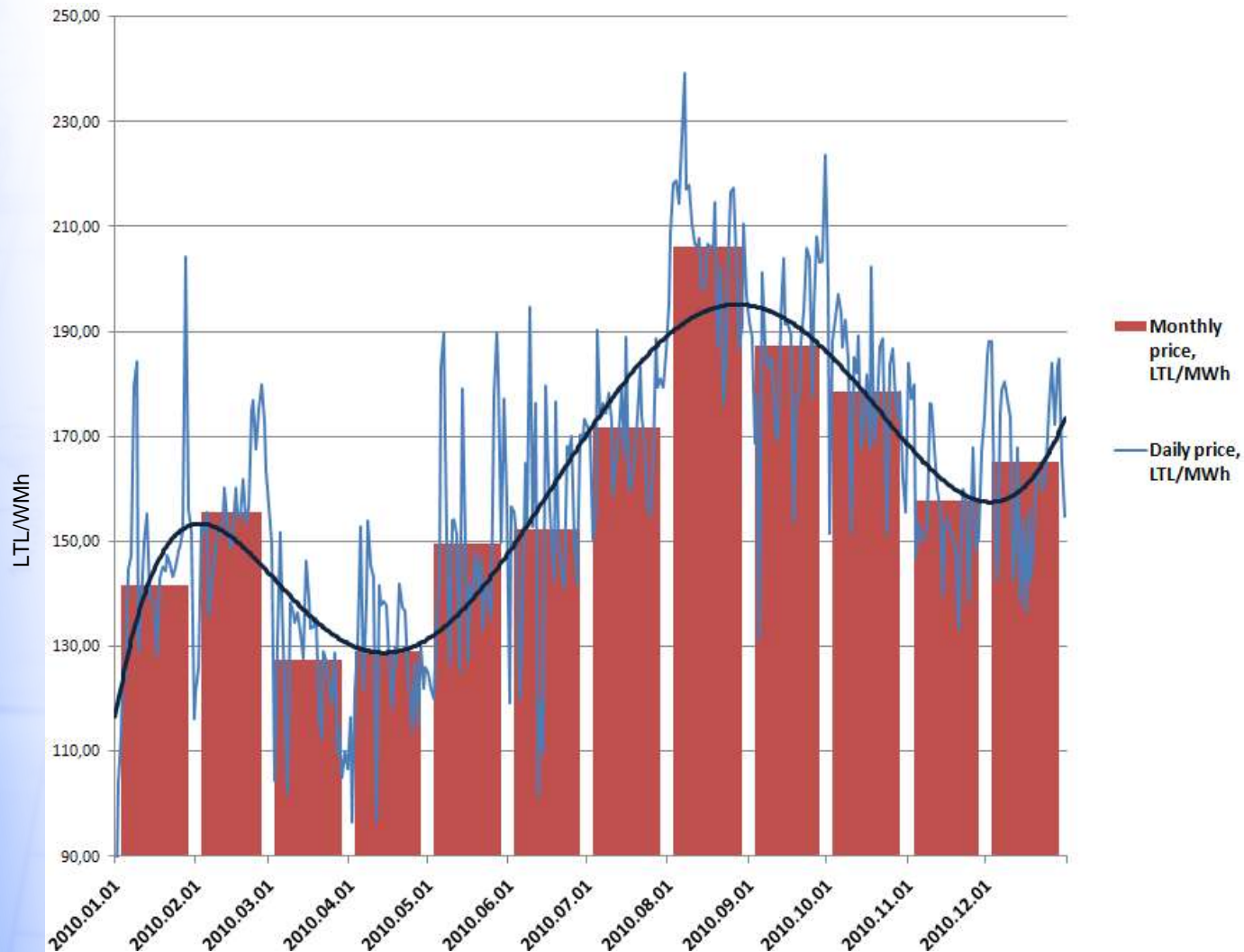
# UPDATE ON LITHUANIAN POWER EXCHANGE

June 3, 2011.

Lina Skrabutėnaitė

BALTPOOL UAB

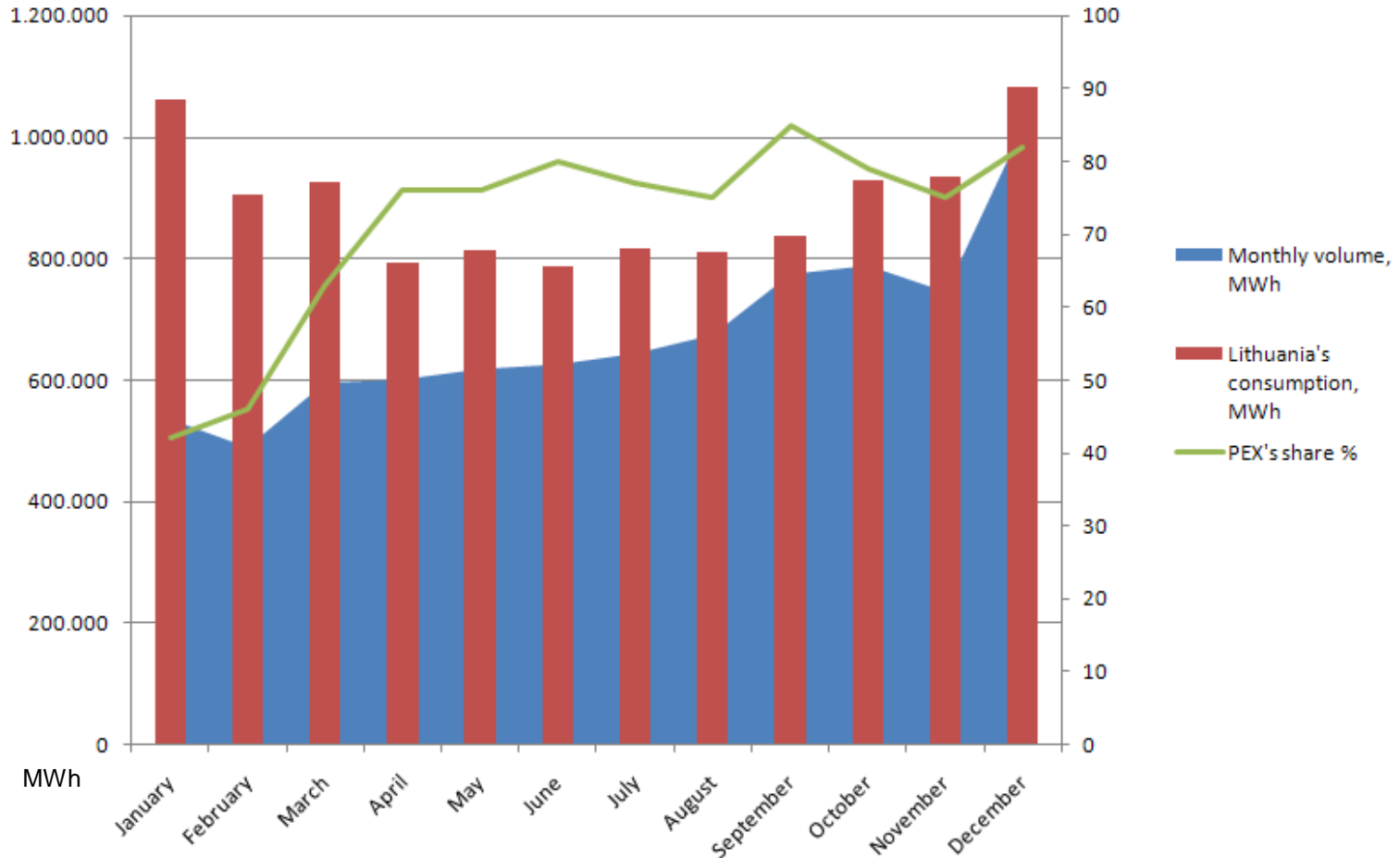
# TREND OF EXCHANGE PRICES DURING 2010



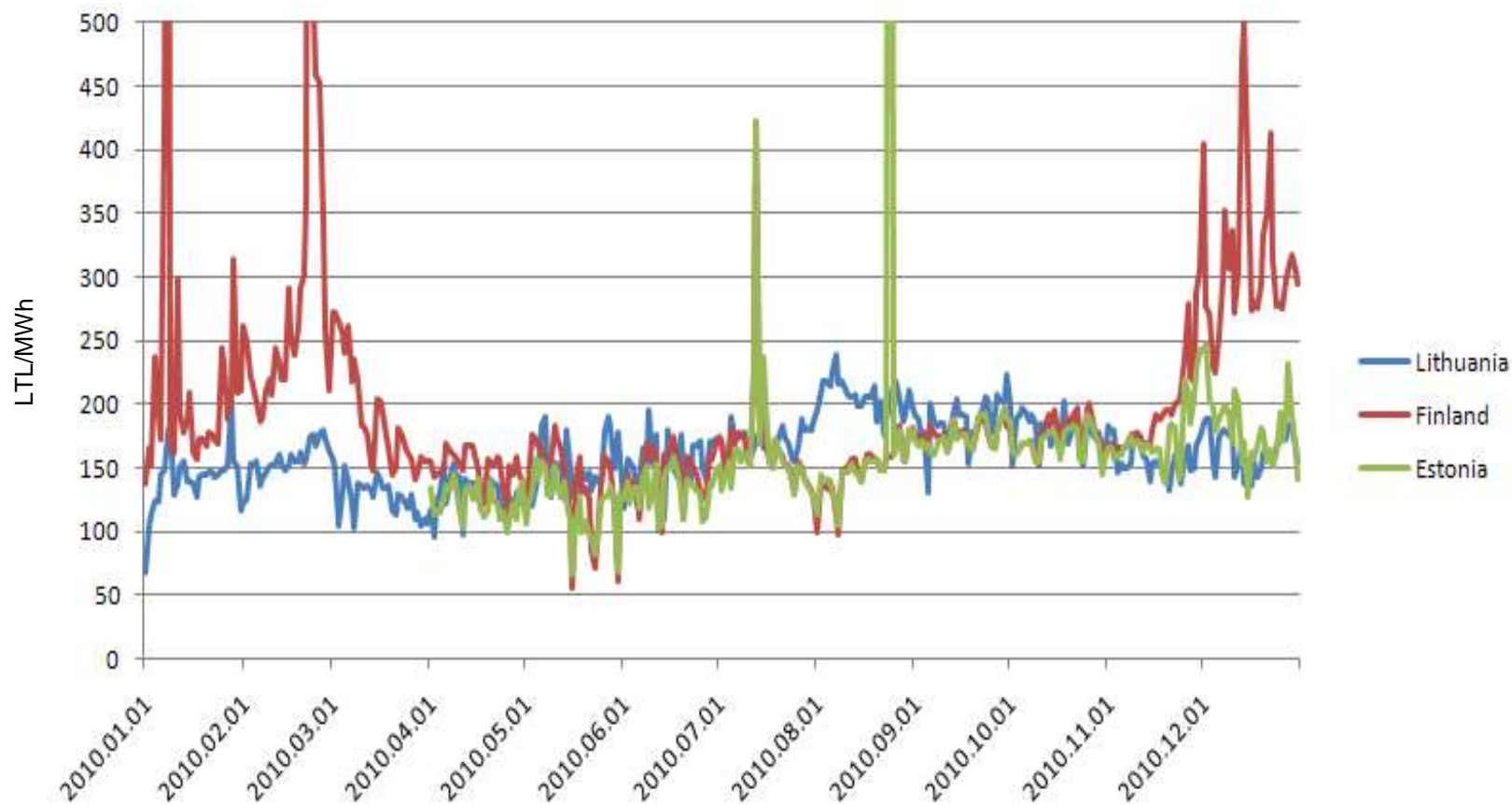
Month	January	February	March	April	May	June	July	August	September	October	November	December	Yearly price:
Average price, LTL/MWh	141,76	155,59	127,47	128,95	149,5	152,31	171,68	206,06	187,27	178,65	157,7	165,02	160,27

# TREND OF ELECTRICITY TRADE VOLUMES DURING 2010

(Total trade volume 8.118.038 MWh)

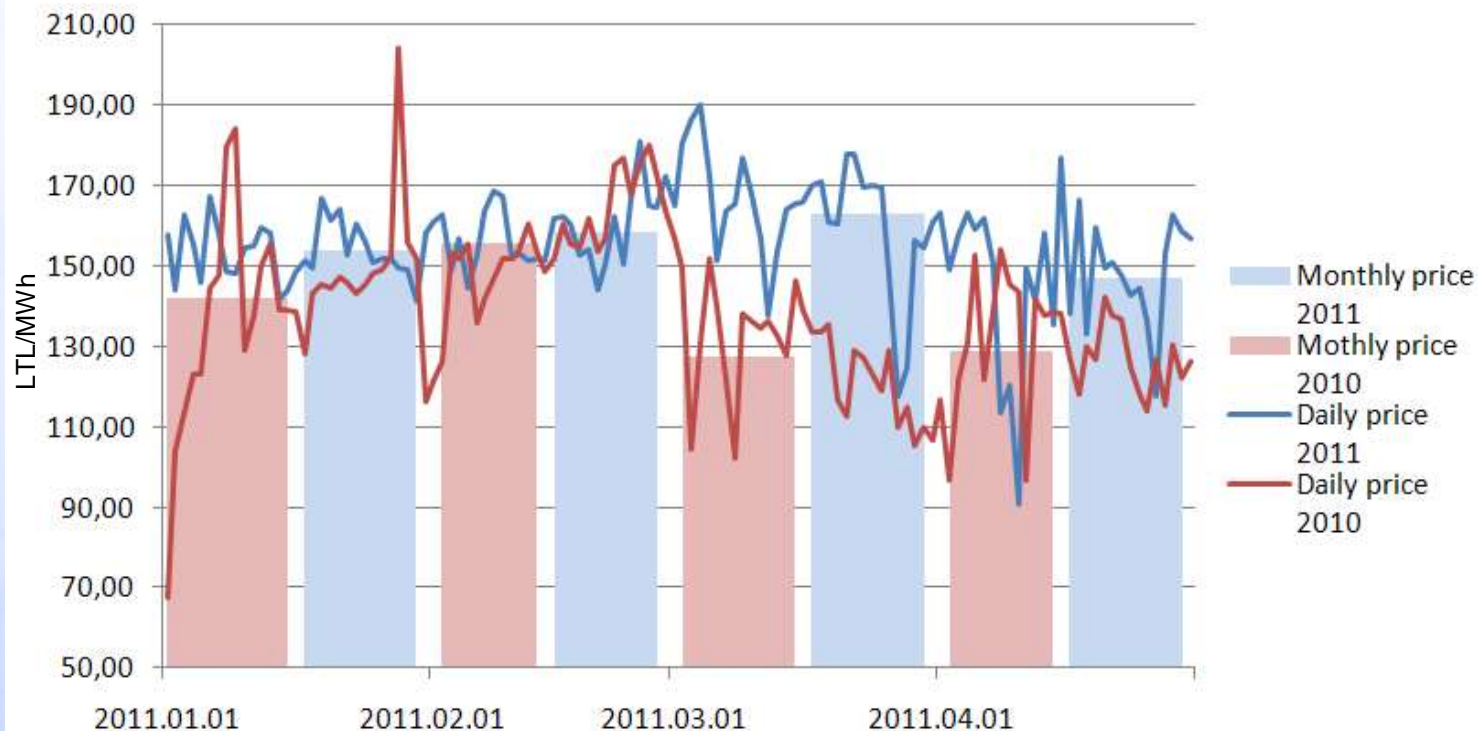


# COMPARISON OF EXCHANGE PRICES AT LITHUANIA AND NEIGHBORING COUNTRIES



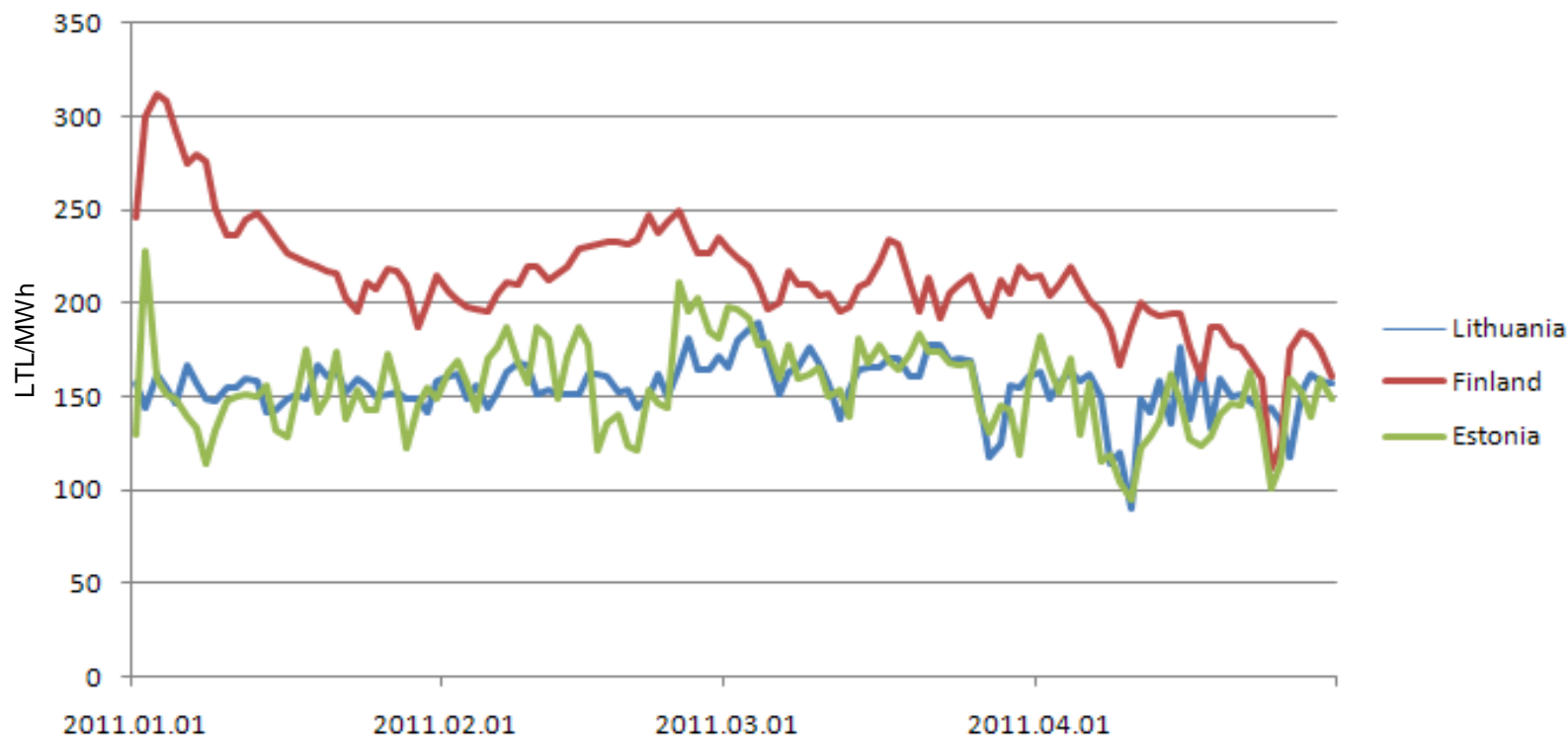
Price LTL/MWh	I q	II q	III q	IV q	Yearly:
Lithuania	141	144	188	167	<b>160</b>
Finland	245	144	165	230	<b>196</b>
Estonia		125	179	176	<b>160</b>

# TREND OF PRICES AT THE EXCHANGE DURING THE YEAR OF 2011, COMPARISON WITH THE YEAR OF 2010.



Indicator/month	January	February	March	April	Average:
Market price for 2010, LTL/MWh	142	156	127	129	<b>138</b>
Market price for 2011, LTL/MWh	154	158	163	147	<b>155</b>

# COMPARISON OF EXCHANGE PRICES AT LITHUANIA AND NEIGHBORING COUNTRIES IN 2011.



Market prices, LTL/MWh	January	February	March	April	Average:
<b>Lithuania</b>	154	158	163	147	<b>155</b>
<b>Finland</b>	238	223	210	183	<b>214</b>
<b>Estonia</b>	149	165	165	139	<b>154</b>

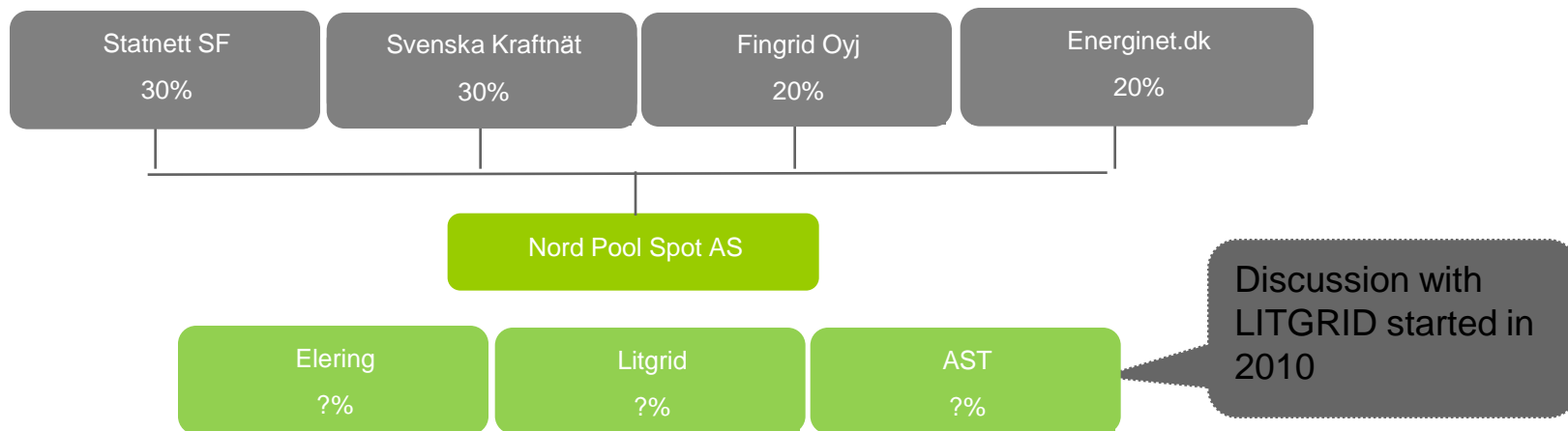
# What next – NPS in Lithuania

- Law on Electricity has to be amended; the requirement for market operator to hold Lithuanian license has to be abolished. Project of the Law is at Seimas (Parliament);
- Nord Pool price area Lithuania – January 1<sup>st</sup>, 2012 (Target)
- NPS/Litgrid/Baltpool cooperation - from December 2010

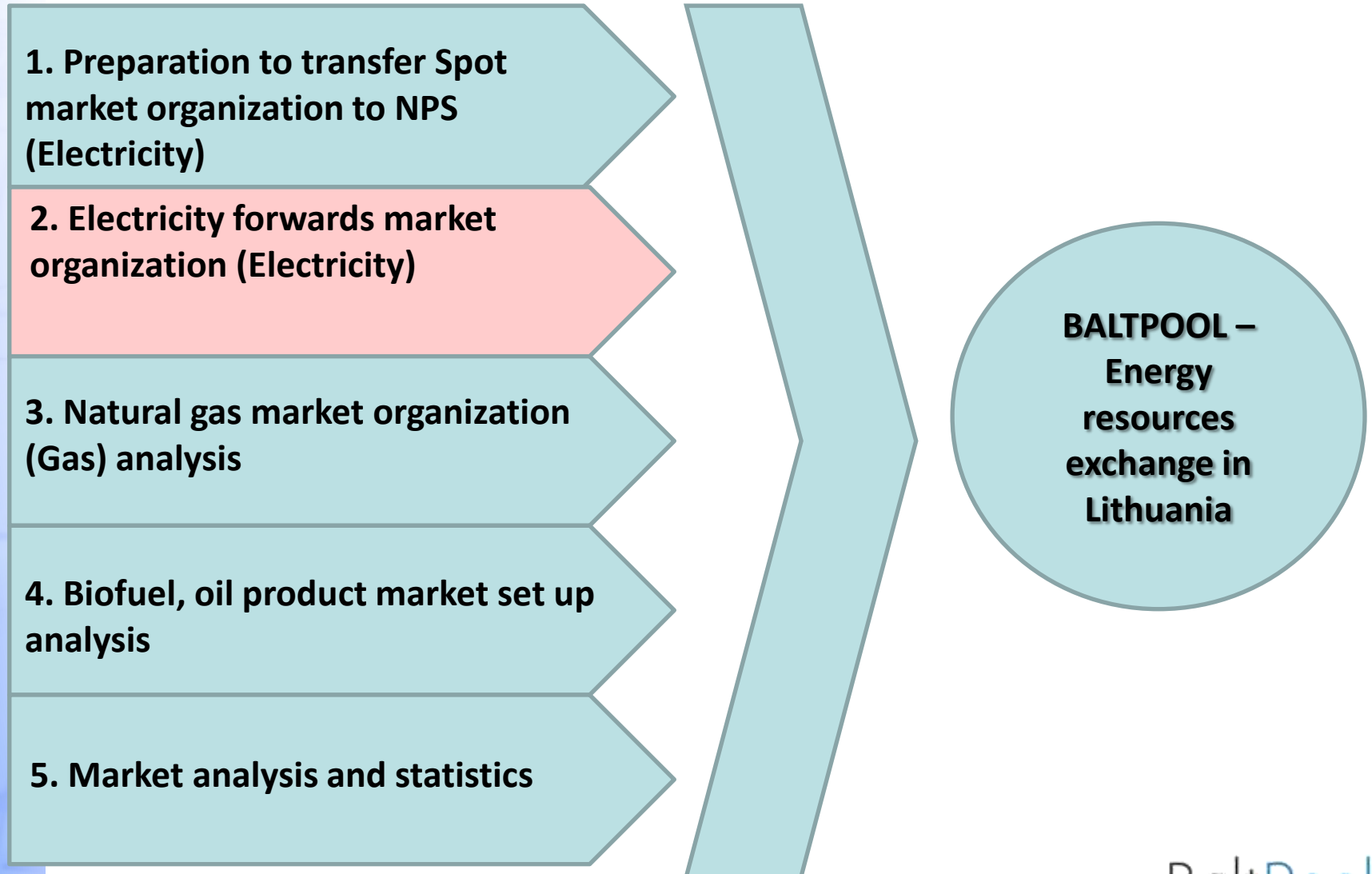


# Shareholder Structure of Nord Pool Spot and representation of Lithuania

## Shareholder structure



# STRATEGIC DIRECTIONS FOR 2011



BALTPOOL, UAB

A.Juozapavičiaus g. 13

LT-09311, Vilnius

Tel. +370 5 278 2600

E-mail: [info@baltpool.lt](mailto:info@baltpool.lt)